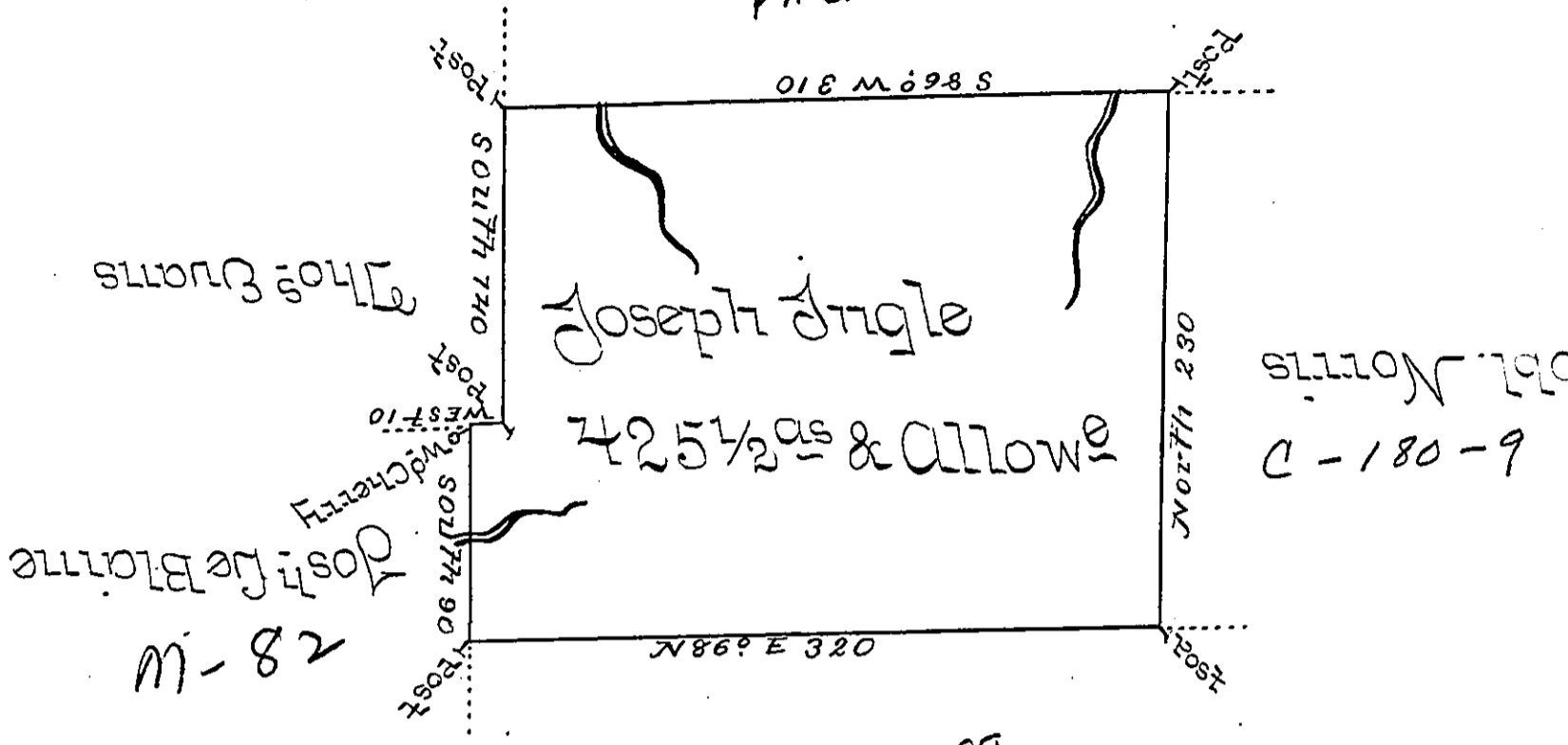


Wm Gray
PAGE - 16



M - 82
C - 172 - 198
Theodora Roberts

A draught of a tract of land called _____ situate joining
land surveyed for Wm Angle & others in Luzerne (formerly
Northampton) County containing four hundred & twenty
five acres $\frac{1}{2}$ & Allow^e of six Percent for roads &c. surveyed
for Joseph Angle the 9th Day of August 1784 in Pursu-
ance of a Warrant Dated the 6th Day of July =

by Wm Gray D.S.

To John Lukens Esq: }
Survey Genl: -

IN TESTIMONY that the above is a copy of the original remaining on file in
the Department of Internal Affairs of Pennsylvania, made
conformably to an Act of Assembly approved the 16th day of
February, 1833, I have hereunto set my Hand and caused
the Seal of said Department to be affixed at Harrisburg,
this Seventh day of June 1898 -

James W. Latta
Secretary of Internal Affairs.